

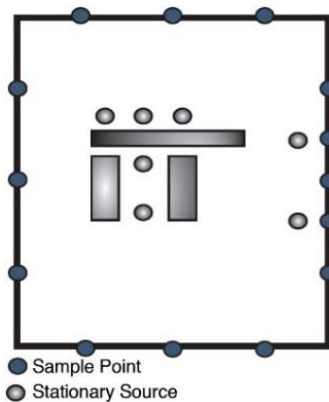
# Benzene Fenceline Monitoring

## Fast Fact

## Real-time Benzene Analysis at $< 9.0 \mu\text{g}/\text{m}^3$ (2.8ppb), Fully Automated Fenceline Compliance

Recent amendments to 40 CFR 60 and 63 have lowered the actionable level for benzene at the refinery fenceline to  $9.0 \mu\text{g}/\text{m}^3$  (2.8 ppb). The MAX300-AIR offers a real-time, fully automated benzene analysis that requires no manual sampling and minimal annualized cost.

The MAX300-AIR is an environmental mass spectrometer capable of measuring benzene in air at  $< 0.3 \mu\text{g}/\text{m}^3$  (0.1 ppb). The speed and sensitivity of the analyzer make it an ideal solution for oil refinery fenceline compliance.



**Figure 1.** According to regulation, sample points may be placed on the fenceline, or along a smaller perimeter that encloses every stationary source.

Air is pulled continuously from each sample point to the MAX300 for analysis and the benzene concentration is reported to the refinery's data system in seconds. There is no need for personnel to manually collect passive diffusion tubes, and no risk of contaminating samples during handling and transport. Purchasing thermal desorption GC-MS systems, or paying for third-party laboratory analyses, is unnecessary.

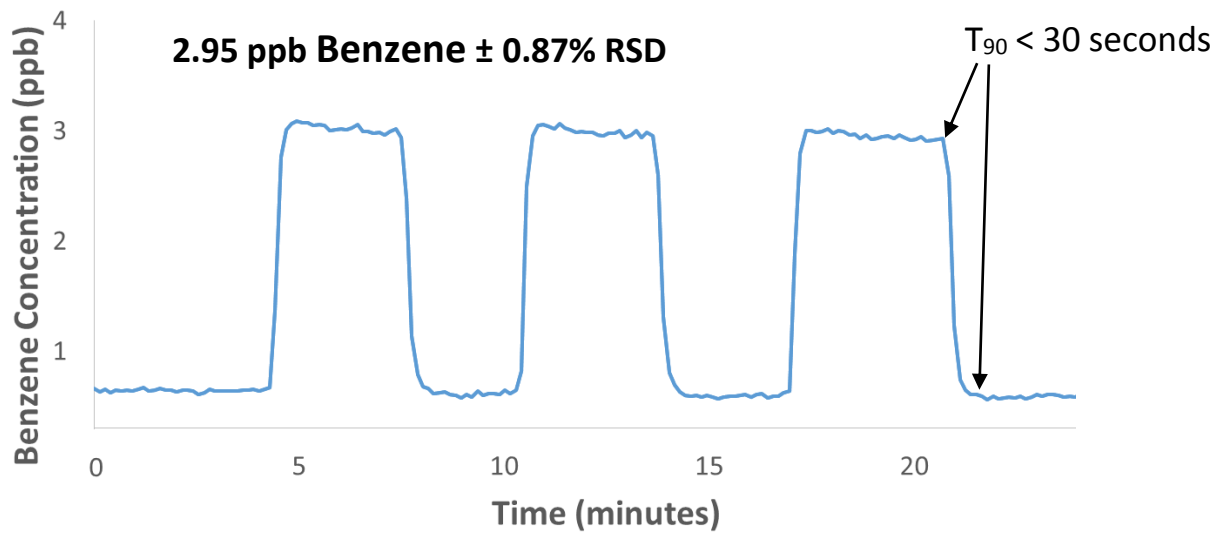
### MAX300-AIR Real-Time Gas Analyzer Specifications

- 24-7 Automated fenceline monitoring
- Benzene low detection limit  $< 0.3 \mu\text{g}/\text{m}^3$  (0.1 ppb)
- No manual sample collection or lab analysis required
- Real-time benzene alerts for easy source identification
- $> 99\%$  Demonstrated uptime
- Low annualized cost
- Can measure additional required VOCs



**Figure 2.** The MAX300-AIR, real-time mass spectrometer, configured for benzene fenceline monitoring

# Real-Time Response to Benzene Emissions



**Figure 3.** The MAX300-AIR performance on 2.95 ppb benzene. The sample alternates between air and a certified bottle of air containing 9.5 µg/m<sup>3</sup> (2.95 ppb) benzene.

The MAX300-AIR can report the presence of 9.0 µg/m<sup>3</sup> (2.8 ppb) benzene within seconds, and has the precision necessary for confident quantitation at trace concentrations well below the EPA actionable level (Figure 3).

When a benzene spike is detected, the refinery knows right away and can easily and accurately identify the source without maintaining weeks of exhaustive notes on plant operations. Real-time monitoring is safer for personnel and the surrounding community, and, combined with wind direction, can rapidly indicate transient benzene from neighboring industrial facilities, highways, rail lines, etc. As fenceline regulations increase to include additional compounds, they can easily be added to the MAX300 analysis method without requiring any hardware changes.

For over 50 years, Extrel has provided the very best support to industry, and installed hundreds of environmental and emissions analyzers at sites all over the world.

**Table 1.** A comparison of fenceline technologies

Monitoring option	Benzene update rate	Manual sample collection	Annualized cost	Additional laboratory investment	Performance unaffected by weather (rain, fog, wind)?	Can easily measure additional VOCs?
MAX300-AIR, environmental mass spectrometer	Real-time	None, automated continuous	\$5,000	None	Yes	Yes
Open-path monitoring (UV-DOAS, FTIR)	Real-time	None, automated continuous	>> \$40,000*	None	No	No
Passive diffusion tube monitoring network	1 update every 2 weeks	26 x per year	\$40,000*	Thermal desorption GC-MS, labor, or third-party analysis	No	No

\* Annualized costs are based on data from *Fenceline Monitoring Technical Support Document*, in Docket ID Number EPA-HQ-OAR-2010-0682

## GAIN REAL-TIME INSIGHT INTO YOUR PROCESS

Process Insights manufactures and delivers premium sensors, monitors, detectors, analyzers, instrumentation, and software that are mission-critical to keep your operations, personnel, and the environment safe – every day across the globe.

Get the most reliable, precision analytical technologies available on the market today. We will work to match your needs and budget, and provide the optimal, and most stable process analysis solution for your application.

---

## CENTERS OF EXCELLENCE | PROVIDING PROVEN SOLUTIONS

Process Insights is committed to solving our customers' most complex analytical, process, and measurement challenges everyday.

### Process Insights – The Americas

4140 World Houston Parkway Suite 180, Houston, TX 77032, USA +1 713 947 9591

### Process Insights – EMEA

ATRICOM, Lyoner Strasse 15, 60528 Frankfurt, Germany +49 69 20436910

### Process Insights – APAC


Wujiang Economic and Technology, Development Zone, No. 258 Yi He Road, 215200 Suzhou, Jiangsu Province, China +86 400 086 0106

---

For a complete range of products, applications, systems, and service options, please contact us at: [info@process-insights.com](mailto:info@process-insights.com)

For a complete list of sales & manufacturing sites, please visit: <https://www.process-insights.com/about-us/locations/>

COSA Xentaur, Tiger Optics, Extrel, Alpha Omega Instruments, ATOM Instrument, MBW Calibration, MGA, Guided Wave, ANALECT and LAR TOC Leader are trademarks of Process Insights, Inc.



REVOLUTIONIZING MEASUREMENT

**EVERYWHERE**